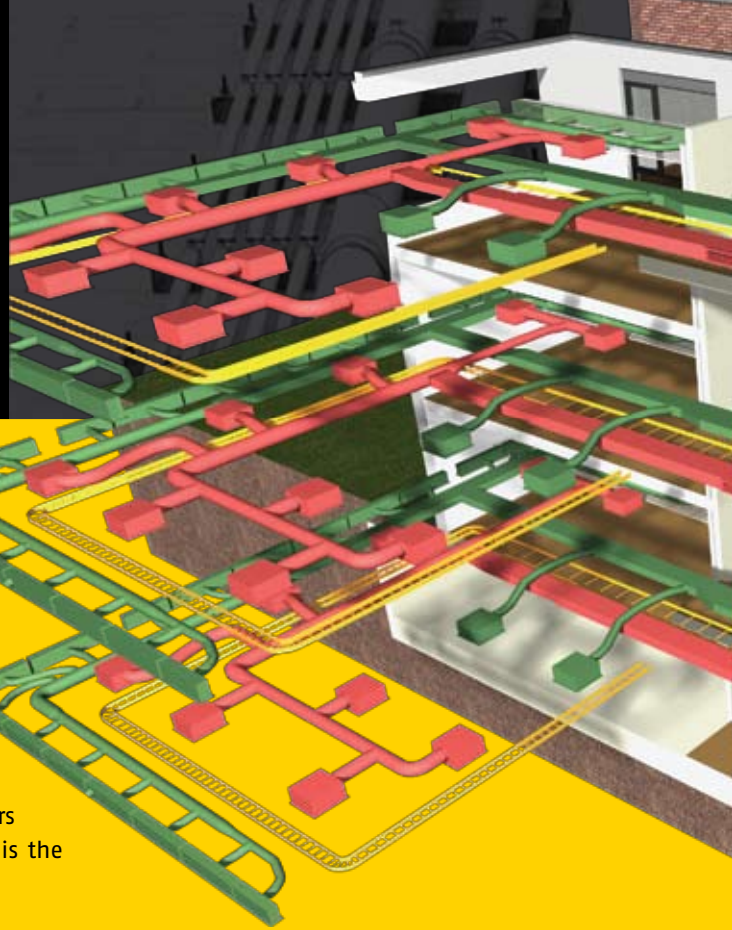


# GRAPHISOFT® MEP MODELER

a Virtual Building Solution



## MEP FOR ARCHITECTS

The MEP (Mechanical/Electrical/Plumbing) Modeler is a new extension to ArchiCAD® 12. Architectural practices and architectural departments of architectural/engineering firms using ArchiCAD can use the Graphisoft MEP Modeler™ to create, edit or import 3D MEP networks (ductwork, piping and cable trays) and coordinate them with the ArchiCAD Virtual Building. The MEP Modeler uses familiar tools and interface.

Poor coordination between trades is perhaps the biggest reason for cost and time overruns in buildings. These problems regularly cause as much as 2-4% cost overrun on total project budget. Thus, owners and contractors are looking to dramatically reduce coordination errors. The MEP Modeler is the solution for architects to help drive more efficiency in the building process.

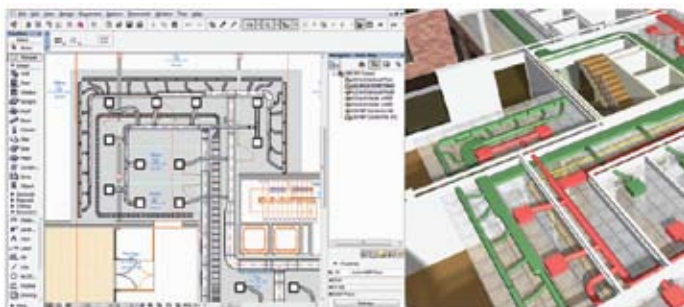
## MAIN WORKFLOWS FOR THE MEP MODELER

### BIM Workflow

- Where the MEP engineer can provide 3D data, architects are able to import the consultant's MEP model into ArchiCAD using the IFC format. In addition to this generic IFC interface, the MEP Modeler package provides an improved connection with AutoCAD MEP 2008/09 via IFC format, using an export plug-in called ArchiCAD Connection.
- The architect using ArchiCAD could request that their MEP consultants "design & engineer" in whatever workflow they are currently using but model with MEP Modeler to improve coordination.

### 2D Workflow

- Based on 2D documentation received from engineers, architects can use the powerful built-in tools to create and edit the MEP model within ArchiCAD.

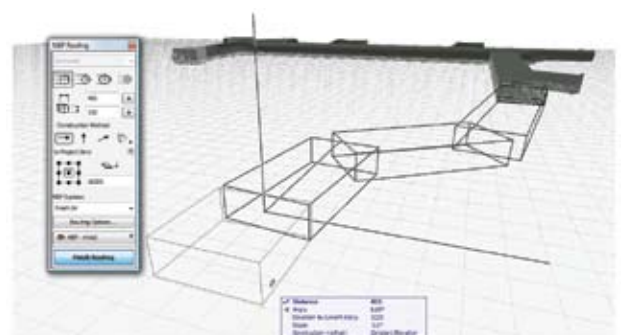


## MEP SYSTEMS

The Graphisoft MEP Modeler uses MEP systems to represent a group of MEP elements that are handled together, making the creation and editing of MEP elements much more efficient and consistent. When new elements are added to an existing MEP system, they will automatically take on the appropriate connection parameters: shape, diameter as well as width and height values.

## SMART MEP ROUTING

The MEP Routing function enables designers to create connected MEP elements with a series of mouse-clicks. ArchiCAD's smart cursor and temporary guide lines provide further help in creating MEP systems from scratch, quickly and easily. Routing is available in the floor plan and the 3D window.



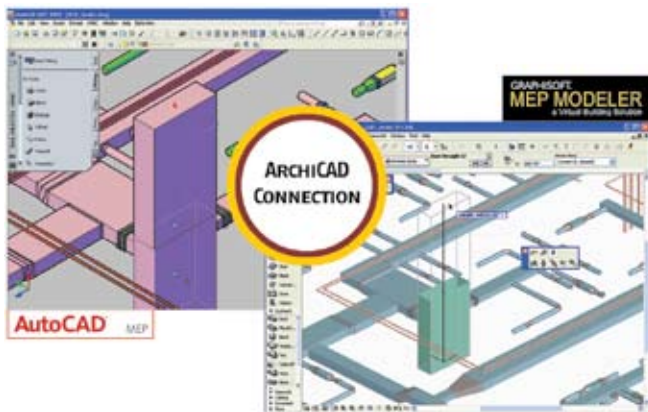
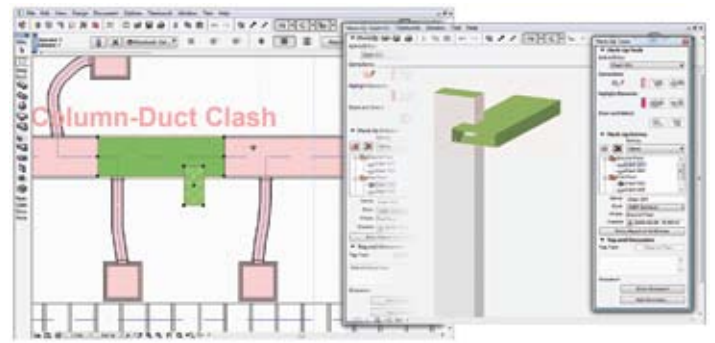
## AUTOMATED COLLISION DETECTION

The Graphisoft MEP Modeler provides a unique, fully automated routine to identify and visualize conflicts between the architectural design and the engineering design of the MEP networks.

Collision detection of MEP systems against the building model ensures fast and precise feedback for the architect, and streamlines coordination with the building engineering teams. MEP collision detection identifies the exact location of discrepancies on the floor plans and the 3D views.

All collision entries are automatically added to ArchiCAD's Mark-Up Palette, providing easy identification and access to all identified collision entries.

Designers can quickly evaluate these entries one-by-one and identify their location in the design with a single click. Discussions can be conducted between the members of the extended design team to evaluate alternative solutions, using ArchiCAD's Mark-Up tools.



## COLLABORATION WITH ENGINEERS

MEP systems can be directly imported into ArchiCAD from Autodesk AutoCAD MEP 2008 and 2009 applications. All AutoCAD MEP systems are identified and automatically converted to native ArchiCAD MEP elements.

The ArchiCAD Connection plug-in can be freely installed with the Autodesk AutoCAD MEP 2008 and 2009 applications. Engineers using AutoCAD MEP can then export their MEP design using the ArchiCAD Connection plug-in, and architects using ArchiCAD can import the MEP design database as intelligent ArchiCAD MEP elements.

FOR  
**GRAPHISOFT  
ARCHICAD 12**  
a Virtual Building Solution

The Graphisoft MEP Modeler runs on both MAC and Windows.  
Software and hardware requirements correspond to those of ArchiCAD 12.

Graphisoft and ArchiCAD are registered trademarks of Graphisoft.  
All other trademarks are the property of their respective owners.

**GRAPHISOFT**  
Virtual Building Solutions

For more details, contact any Graphisoft office, or visit: [www.graphisoft.com](http://www.graphisoft.com)

Headquarters  
Graphisoft R&D zrt.  
Phone: +36 (1) 437 3000  
Fax: +36 (1) 437 3099  
E-mail: [mail@graphisoft.hu](mailto:mail@graphisoft.hu)  
Web: [www.graphisoft.com](http://www.graphisoft.com)

Japan  
Graphisoft Japan KK.  
Phone: +81 (3) 55 45 3800  
Fax: +81 (3) 55 45 3804  
E-mail: [mail@graphisoft.co.jp](mailto:mail@graphisoft.co.jp)  
Web: [www.graphisoft.co.jp](http://www.graphisoft.co.jp)

Spain  
Graphisoft Spain, SL.  
Phone: +34 (91) 535 8750  
Fax: +34 (91) 535 8751  
E-mail: [mail@archicad.es](mailto:mail@archicad.es)  
Web: [www.archicad.es](http://www.archicad.es)

United Kingdom  
Graphisoft UK Ltd.  
Phone: +44 (1483) 263 150  
Fax: +44 (1483) 263 151  
E-mail: [mail@graphisoft.co.uk](mailto:mail@graphisoft.co.uk)  
Web: [www.graphisoft.co.uk](http://www.graphisoft.co.uk)

Germany  
Graphisoft Deutschland GmbH.  
Phone: +49 (89) 746 430  
Fax: +49 (89) 746 43299  
E-mail: [mail@graphisoft.de](mailto:mail@graphisoft.de)  
Web: [www.graphisoft.de](http://www.graphisoft.de)

Russia  
Graphisoft Representative Office  
Phone: +7 495 510 2503  
E-mail: [russia@graphisoft.com](mailto:russia@graphisoft.com)  
Web: [www.graphisoft.ru](http://www.graphisoft.ru)

South-East Asia & China  
Graphisoft Representative Office  
Phone: +65 65632827  
Fax: +65 65632827  
E-mail: [asia@graphisoft.com](mailto:asia@graphisoft.com)

United States  
Graphisoft U.S., Inc.  
Phone: +1 (617) 485 4203  
Fax: +1 (617) 485 4201  
E-mail: [info@graphisoft.com](mailto:info@graphisoft.com)  
Web: [www.graphisoftus.com](http://www.graphisoftus.com)